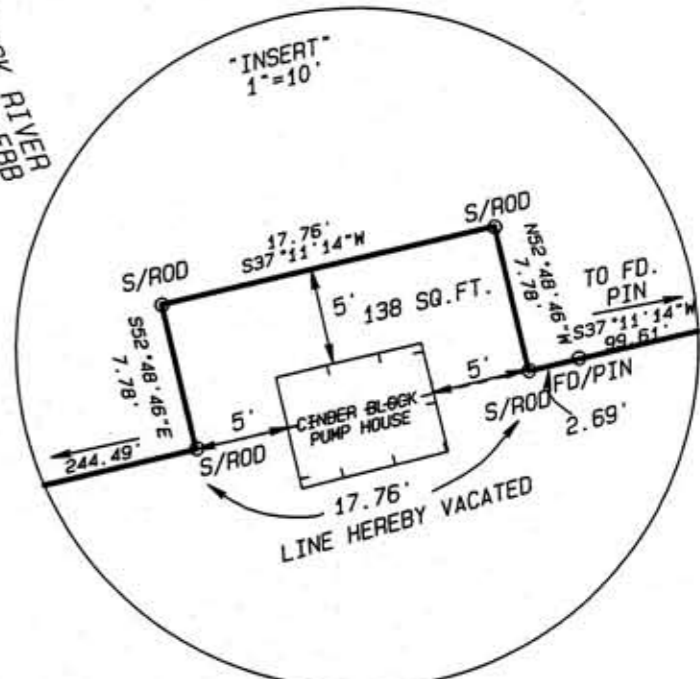
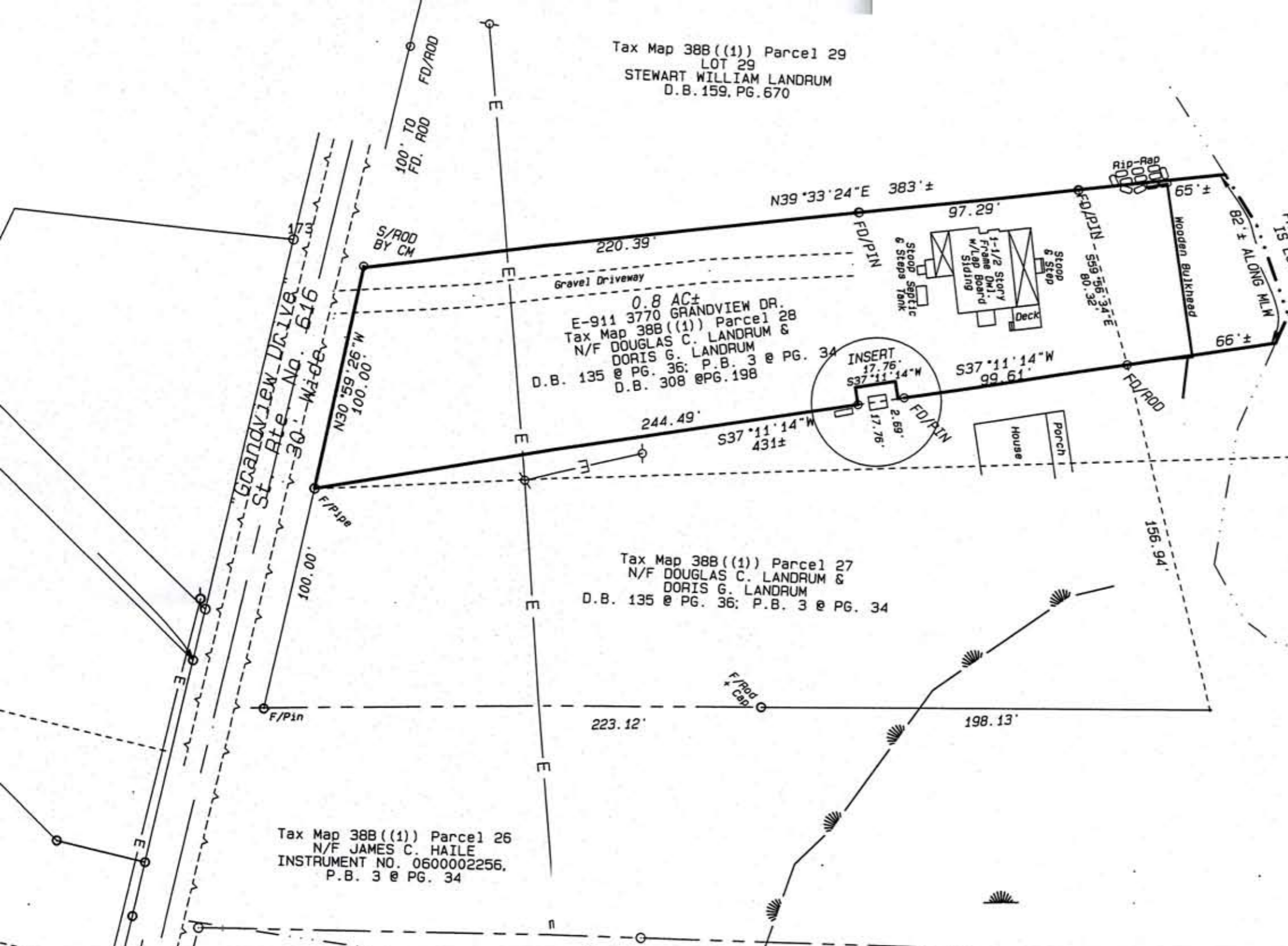


Tax Map 38B((1)) Parcel 29  
 LOT 29  
 STEWART WILLIAM LANDRUM  
 D.B. 159, PG. 670



COUNTY APPROVAL  
 CERTIFICATE BY PLATS OFFICER  
 \*APPROVED BY THE ESSEX COUNTY PLATS OFFICER.\*

DATE \_\_\_\_\_  
 PLATS OFFICER \_\_\_\_\_

CERTIFICATION BY CIRCUIT COURT CLERK  
 \*IN THE OFFICE OF THE CLERK OF THE CIRCUIT COURT  
 OF THE COUNTY OF ESSEX ON THE \_\_\_\_\_ DAY OF  
 \_\_\_\_\_ O'CLOCK, \_\_\_\_\_ M.\*

TESTE. \_\_\_\_\_  
 CIRCUIT COURT CLERK \_\_\_\_\_



I certify that this perimeter survey is correct to the best of my knowledge and belief, subject to easements, servitudes, and covenants of record.

Notes: LOT LINE ADJUSTMENT, 138 SQ. FT. ADDED TO LOT 27. SEE INSERT.

LOCATION SURVEY AND  
 PROPERTY LINE ADJUSTMENT  
 "GRANDVIEW" ~ LOTS 27 & 28  
 RAPPAHANNOCK MAGISTERIAL DISTRICT  
 ESSEX COUNTY, VIRGINIA



**D & M Surveyors, P.C.**

221 Queen Street, P.O. Box 1828  
 Tappahannock, Va. 22560  
 Office: 804-443-3080 Fax.: 804-443-4550  
 Email: dmsurveyors@verizon.net

Tax Map 38B((1))  
 Parcel 27 & 28  
 Revised:

Date: 07-09-08	Drawn By: CMP/RPD	Disk No.	Job No.
Scale: 1"=50'	Checked By: RPD		ER-1257